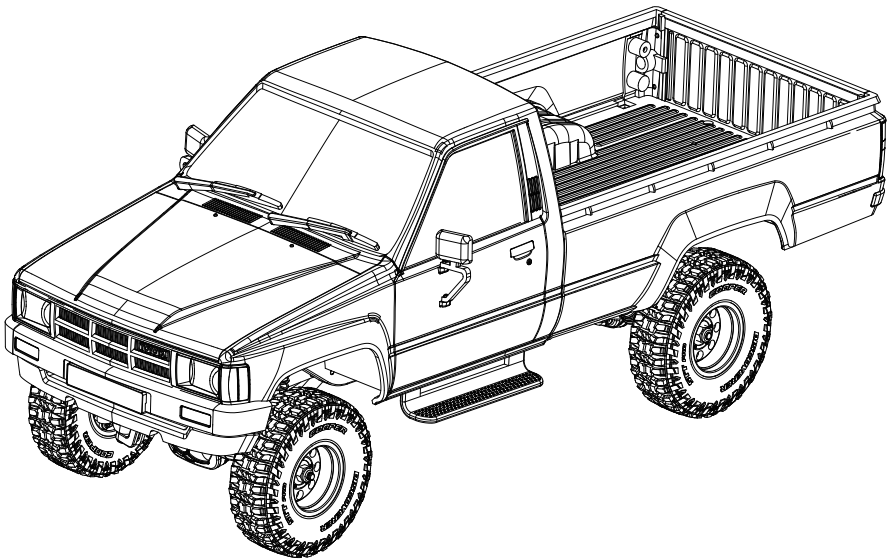


**Fms**

**1:18**

**TOYOTA HILUX 1983**



*Instruction Manual*

**操作手册**

## Introduction

Pickup trucks, popular throughout the world are capable of carrying both people and goods, and there is none more famous than Toyota's Hilux. Whether in the rain forests of Southeast Asia or the deserts of Africa, you can always find a Hilux. Even in some wartorn areas like Iraq, Kosovo and Afghanistan Hilux's have been converted into military vehicle with mounted machine guns by local armed forces. In the North American market, the spiritual home of pickups the Hilux is not inferior.

TV show Top Gear once conducted a series of tests on Hilux- letting a 13-year old car travel 300,000 kilometers and experience tree crashes, seawater soaking and trailer hits, even burning the cockpit! All these can't stop the Hilux running again. In the end, Hilux was put on the roof of a 73-meter-high building, which was then blown up. Smoke bellowed, yet from the ruins the Hilux could still be started again. With these experiments proving its undoubted durability, quality and reliability perfectly, Toyota's Hilux was displayed in Top Gear's studio as a lifetime honorary guest.

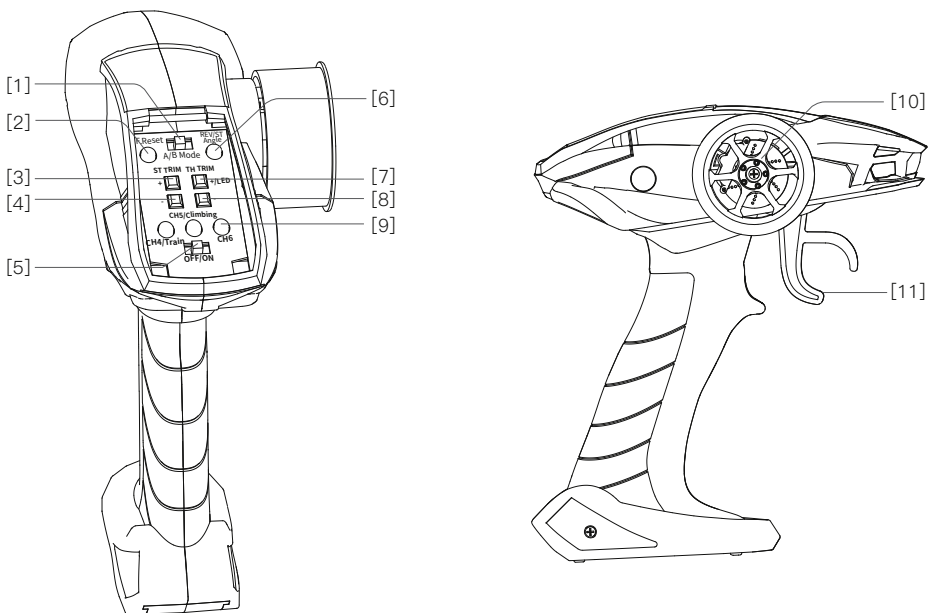
This officially licensed FMS Hilux is a late third-generation Hilux, but the grille and headlights have been back-dated to the arguably more attractive round units found on earlier rigs. With a tailgate that lowers the loading height, a spacious cab and a sunken frame, FMS Hilux adheres to the revolutionary "square body" and features a perfectly replicated real car in terms of 4wd, metal beams, aluminum frame rails and reliable multi-link suspension system.

The exquisite design is perfectly expressed from classic yellow body paint with sports stripes to the fantastic electric silver rearview mirror, from realistic interiors, center console, and steering wheel to openable tailgate and ridged cargo bed. The spacious bed lets you experiment with different cargo for a classic scale Hilux appearance.

Open the hood and explore the large inside space where the, ESC, receiver and battery are readily accessible, making upgrading an easy task.

Light sets have linked light control functions with light control plug-ins including headlights, turn signals and reverse lights. Tires and wheels as featured on the real truck, molded in a soft all-terrain pattern for running on any terrain.

## Transmitter intruction



[1]	A/B Mode switch key	[7]	Throttle trim + (TH TRIM +) mode A / light control switch 1 mode B
[2]	Re-set button (F.Reset) Mode A	[8]	Throttle trim - (TH TRIM -) mode A / light control switch 2 mode B
[3]	Steering Trim+ (ST TRIM+) Mode A	[9]	Channel 6 (reserved)
[4]	Steering Trim- (ST TRIM-) Mode A	[10]	Steering wheel
[5]	Power Switch	[11]	Throttle trigger
[6]	Reverse key mode a / steering angle limit mode B		

A/B mode function toggle switch		
F.Reset	In the use of the disorder settings, not back to the normal state, you can use Factory.Reset function	Make sure that the mode function toggle switch is in mode A, hold the steering wheel left or right, and click the F. Reset button at the same time. After two clicks, it means that the factory settings have been completed.
REV	After replacing the steering gear, the steering gear is reversed	Make sure that the mode function toggle switch is in mode A, twist the left or right steering wheel, and click Rev button at the same time. After ringing, it means that the reverse setting of steering gear has been completed.
	After replacing the motor, there is a reverse	Make sure that the mode function toggle switch is in mode A, pull or push the throttle, and click Rev button at the same time. After ringing, it means that the motor reverse setting has been completed.
	Adjust 30 / 50 / 100% steering radian	Make sure that the mode function toggle switch is in mode B, and click the ST Angle key. After a click, it means that the 30% steering radian has been set. Click the ST Angle button again, and you will hear two beeps, indicating that the setting of 50% steering radian has been completed. Click the ST Angle button again, and you will hear three beeps, indicating that the 100% steering radian has been set. Then click to cycle to a click to indicate that the 30% steering radian has been set.
ST TRIM	When the steering center is not centered	Make sure that the mode function toggle switch is in mode A, press ST TRIM+ or - button to fine tune the steering center. Every click of the button will ring. When the maximum and minimum values are reached, a long sound will appear. When the median value is reached, it will ring twice.
TH TRIM	When the throttle is not centered	Make sure that the mode function toggle switch is in mode A, press TH TRIM + / - button to fine tune the throttle center. Every click of the button will ring. When reaching the maximum and minimum value, the button will ring, when reaching the median value, the button ring twice.
LED	Light setting	One-button for multi-mode switch

Emitter: forget reminder	If the transmitter does not receive any command, it will give an alarm after 10 minutes and enter sleep mode after 2 minutes
Transmitter: frequency alert	When the transmitter does not match the receiver, the indicator light of the transmitter keeps flashing
Transmitter: no frequency matching + low power reminder 4.5V	The indicator light of the transmitter flashes slowly and makes a sound
Transmitter: low power reminder 4.5V	The indicator light of the transmitter flashes slowly
Car: frequency alert	The headlights keep flashing
Car: low power alarm 6.3-6.4v	All lights keep flashing, steering and throttle are not controlled
Car: reminders to prevent forgetting	If the vehicle does not receive any signal, it will flash back and forth after 10 minutes and enter sleep mode after 2 minutes

Button	Light Position	Function	Power on is off by default	Times for Pressing					Control Mod	Remarks
				I	II	III	IV	V		
LED 1#	Headlight	Reversing light		•	OFF	OFF	OFF	OFF		
		Emergency Flashers	OFF	•	•	OFF	OFF			
	Rear light		•	•	•	•	•	Throttle linkage control	The reversing lamp is on during reversing operation	

LED2#	Turn Signal		I	II	OFF				
		Left turn signal				OFF		Direction linkage control	
		Left turn signal				OFF		Direction linkage control	
		Emergency Flashers		•	OFF				

## Transmitter Battery Installation

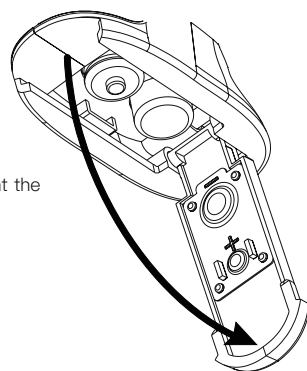
Battery Type: AAA

Battery Installation:

1. Open the battery compartment cover.
2. Insert 4 fully-charged AAA batteries into the compartment. Make sure that the battery makes good contact with the battery compartment's contacts.
3. Replace battery compartment cover.

Low battery alarm: When the battery is lower than 4.2V, the LED on the panel will flash slowly.

Note: When installing the batteries, be careful to handle the positive and negative poles. (As shown in the picture on the right)



## Warnings

- This vehicle is not intended for those under 14 years of age without proper adult supervision. It is not a toy! Failure to operate or maintain this vehicle in a safe manner can result in bodily harm.
- Replace damaged components with original factory-parts. Pay special attention to the polarity of all vehicle wiring.
- Only use approved 2 cell lithium polymer batteries. Do not over-charge or over dis-charge the battery as doing so may cause the battery to become a fire hazard. If the battery should become hot during charging, discontinue charging immediately and disconnect the battery from the charger. Never leave the battery unattended while charging. If you are unsure of how to charge this battery, please seek the advice of experienced RC users. Never let children charge the battery without adult supervision.
- The motor will become hot during use. Allow 10-15 minutes between runs for the vehicle to cool down. Doing so will prolong the life of your vehicle.
- Use common sense when selecting the environment to operate your vehicle. Do not operate near power cables, cellular/radio towers, deep water or unstable terrain. The operator is solely responsible for their actions.
- The product is composed of precision electrical components. It is critical to keep the product away from moisture and other contaminants. If exposed to a humid environment, make sure the electronics are fully dried prior to using them again.
- Always check the radio range of the vehicle prior to operation in order to prevent radio loss or interference.
- Operate this product within your ability. If the vehicle is dangerous to retrieve, it's never worth the risk.
- Always turn on the transmitter before connecting the battery on the model. When turning off the model, always disconnect the battery first, and then turn off the model, always disconnect the battery first, and then turn off the transmitter. If this order is reversed, the model may become uncontrollable and cause serious damage.
- Never allow transmitter batteries to run low as it may cause loss of vehicle control.
- Plastics on the vehicle are susceptible to damage or deformation due to extreme heat and cold climate. Do not store the model near any source of heat such as oven or heater. Store the model indoors, in a climate-controlled, room temperature environment.
- Never shorten the receiver antenna; this may affect the transmitting range of the radio system.
- Only use specified battery (X4 AAA batteries).
- Do not open, disassemble, or attempt to repair the battery.
- Do not crush/puncture the battery, or short the external contacts.
- Do not expose to excessive heat or liquids.
- Do not drop the battery or expose to strong shocks or vibrations.
- Always store the battery in a cool, dry place.
- Do not use the battery if damaged.
- The Battery must be disconnected the receiver when charging.

## Power On

Follow the steps below to turn on the transmitter:

1. Check to make sure that that battery is fully charged and installed correctly.
2. Toggle the switch to the [ON] position. When active the R.LED will be lit.
3. Connect the receiver to power.
  - For safety always power on the transmitter before the receiver.



### Note

- Operate with caution in order to avoid damage or injury.
- Make sure that the throttle is at its lowest position and the switches are set to their up position.

## Instructions

After setting up, follow the instructions below to operate the system.

1. Automatic code matching (the transmitter and receiver have been successfully coded before leaving the factory.)

If you need to replace another transmitter or receiver, please follow the following steps to code:

1. When the transmitter power is on and the code matching mode is on, the light keeps flashing;
2. The power supply of the receiving board is turned on, and the front lights keep flashing to enter the code matching mode;
3. When the code matching is successful, all the transmitter lights are on and all the lights on the car are off;

Note: when code matching, please operate the transmitter to enter the code matching state first, and then operate the receiver to enter the code matching state.

### 2、POWER OFF

Follow the steps below to turn off the system:

1. Disconnect the receiver power.
2. Toggle the transmitter's power switch to the off position.



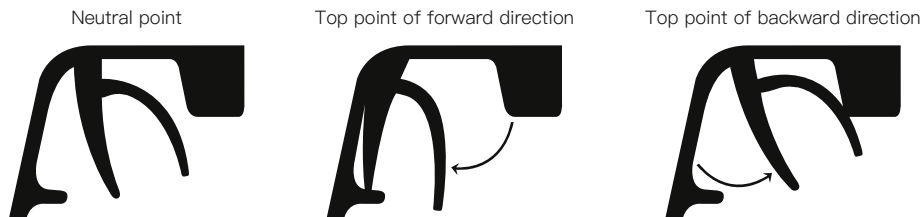
#### Note

Make sure to disconnect the receiver power before turning off the transmitter. Failure to do so may lead to damage or serious injury.

## Transmitter specification

Product Model	HT-TX02
Adaptive model	Car
RF	2.4GHz
Transmitting power	<20dBm
Wireless protocol	ANT
Distance	>100m(ground)
Channel Resolution	256 Grade
Battery	6V DC 1.5AAA*4
Charging Interface	NO
Life time	According to battery type
Low Voltage Warning	<4.45V
Antenna Type	Built-in single antenna
Data interface	NO
Temperature Range	-10°C ~ +60°C
Humidity Range	20-95%
Online Update	NO
Color	Black
Size	118mm *73mm *145mm
Weight	151g
Certification	CE, FCC ID: 2AUBX-HT-TX02

## Throttle stick position



## Operating the vehicle

Step 1: turn on the transmitter, the headlamp of the transmitter will flash and enter the frequency matching mode.

Step 2: turn on the receiver switch, the headlight will flash and enter the frequency matching mode.

Step 3: when the transmitter and receiver are successful in frequency up, the front lights of the transmitter will be on for a long time, and the front lights of the vehicle will be off.

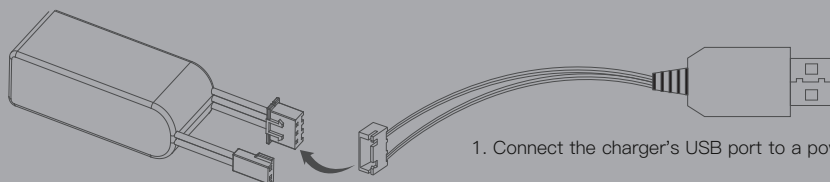
## Setting the Gear Mesh

The gear mesh is the clearance between the pinion and spur gears in your vehicle. If the motor or gearing components are replaced, check that the gears are not meshing too tightly as this may cause premature wear.



## Charging the Battery

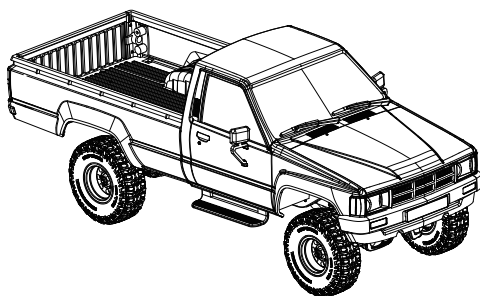
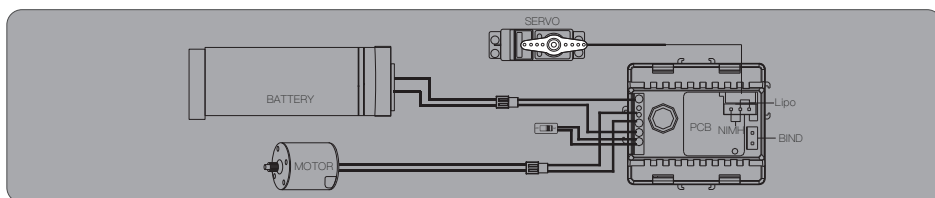
1. Connect the charger to a USB port then connect the battery to the charger.
2. When charging, the Green LED is flash, when charged, the Green LED is stable.
3. Do not let the battery charge unattended!
4. If the battery or charger is hot, disconnect the battery and charger immediately as this may be caused by an internal short-circuit.



1. Connect the charger's USB port to a power source.

2. Connect the battery to the charger.

- Always charge LiPo batteries on non-flammable, heat-resistant surfaces.
- Always use a LiPo-safe bag or container while charging. Do not allow LiPo cells to overheat at any time. Cells which reach greater than 140 Fahrenheit(60°C) will usually become damaged and will catch fire.
- Do not charge the LiPo pack while it is still in the model. Never charge or store battery packs in a vehicle.
- Do not discharge LiPo; doing so will damage the battery.
- Do not expose LiPo cell to water or moisture at any time.
- Do not store battery near open flame or heater.
- Do not assemble LiPo cells or pre-assembled packs together with other LiPo cells or packs.
- Always store LiPo battery in a secure location away from children.
- Always remove the LiPo battery if model is involved in any kind of crash.
- Carefully inspect the battery and connectors for even the smallest damage.
- CAUTION: Cells may become hot after usage. Allow the pack to cool to room temperature prior to recharging.
- Do not allow the electrolyte to get into eyes or on skin. Wash affected areas immediately if they if they come into contact with electrolyte. Do not alter or modify connectors or wires of a LiPo battery pack.
- Always inspect the condition of the battery before charging and operating.
- Do not short circuit the LiPo battery.
- Do not have contact with a leaky/damaged battery directly.
- Do not charge battery out of recommended temperature range(0°C 45°C).



## NOTE

1. If it is not in use for a long time, unplug and take off the battery to prevent battery leakage.
2. Do not open, disassemble, or attempt to repair the battery.
3. Please disconnect the battery from the receiver before charging.



## Spare parts list

C2159	1:18 HILUX Hood	C2172	1:18 HILUX Window
C2160	1:18 HILUX Front and Rear Light Cup Set	C2074	1:18 Rear Wheel Shaft
C2161	1:18 HILUX Hood Mount Set	C2071	1:18 Wheel Hex
C2162	1:18 HILUX Rearview Mirror And Wiper	C2063	1:18 SHOCK PLASTIC PARTS
C2163	1:18 HILUX Bumper And Side Panel	C2064	1:18 HILUX Connecting Rod
C2164	1:18 HILUX Lens	C2066	1:18 BALL HEAD
C2165	1:18 HILUX Body SHELL	C2067	1:18 Steering Hub & Spindle
C2166	1:18 HILUX CHASSIS	C2068	1:18 FRONT/REAR AXLE parts
C2167	1:18 HILUX HANDLE	C2069	1:18 SERVO HORN
C2168	Eight Planets Style Wheels plastic parts set	C2126	1:18 HILUX MIRROR LENS
C2052	FMS LIPO Battery 2S LIPO 380mAh for 1:18	C2075	1:18 FRONT OUTDRIVE SHAFT
C2169	1:18 HILUX Light set	C2076	1:18 Gear Box Plastic Parts
C2051	FMS USB Charger	C2139	FMS 1:18 Receiver
C2049	1:18 050 Motor set	C2138	FMS HT-TX02 Transmitter
C2057	1:18 Plastic Gear set	C2137	FMS HT-TX02 Transmitter Receiver Set
C2170	1:18 HILUX Transmission Shaft full set	C2173	11816 DASH BOARD
C2021	1:18 1KG High Torque 3wire Servo		

## CE Warning

The antenna(s) used for this transmitter must be installed to provide a separation distance of at least 20 cm from all persons and must not be co-located or operating in conjunction with any other transmitter. End-users and installers must be provided with antenna installation instructions and transmitter operating conditions for satisfying RF exposure compliance.

## Appendix 1 FCC Statement

FCC ID: 2AUBX-HT-TX02

This equipment has been tested and found to comply with the limits for a Class B digital device pursuant to part 15 of the FCC rules. These limits are designed to provide reasonable protection against harmful interference in a residential installation. This equipment generates, uses and can radiate radio frequency energy and, if not installed and used in accordance with the instructions, may cause harmful interference to radio communications. However, there is no guarantee that interference will not occur in a particular installation. If this equipment does cause harmful interference to radio or television reception, which can be determined by turning the equipment off and on, the user is encouraged to try to correct the interference by one or more of the following measures:

- Reorient or relocate the receiving antenna.
- Increase the separation between the equipment and receiver.
- Connect the equipment into an outlet on a circuit different from that to which the receiver is connected.
- Consult the dealer or an experienced radio/TV technician for help.

To assure continued compliance, any changes or modifications not expressly approved by the party responsible for compliance could void the user's authority to operate this equipment.

This equipment complies with Part 15 of the FCC Rules. Operation is subject to the following two conditions:

- (1) This device may not cause harmful interference.
- (2) This device must accept any interference received, including interference that may cause undesired operation.

Caution!

The manufacturer is not responsible for any radio or TV interference caused by unauthorized modifications to this equipment. Such modifications could void the user authority to operate the equipment.

1. The antenna(s) used for this transmitter must be installed to provide a separation distance of at least 20 cm from all persons and must not be co-located or operating in conjunction with any other transmitter. End-users and installers must be provided with antenna installation instructions and transmitter operating conditions for satisfying RF exposure compliance.
2. Move all your channels to the desired position.
3. Select [All channels] and then [Yes] in the confirmation box.

## Declaration of Conformity (DoC)

We,  
Dongguan Solid Model Technology Co.,Ltd  
3/F, Building B, 3rd Industry Zone,  
Matigang, Dalingshan Town  
Dongguan City of China 523810.

Phone:0769-86976655  
Web:www.fmsmodel.com

declare under our responsibility that the product:  
Type of Equipment: Driving System & 2.4GHz Control System  
Brand Name: FMS  
Compatible for cars: 1: 18 Toyota Hilux 1983  
Equipment Model: 11816



to which this declaration relates is in conformity with the essential requirements and other relevant requirements of the Directive 2014/53/EU, EMC Directive 2014/30/EU, EMC Directive 2014/53/EU, FCC Identifier 2AUBX-HT-TX02, EU RoHS Directive 2011/65/EU and Council Directive 2014/30/EU. The product is in conformity with following standards and/or other normative documents:

ETSI EN 301 489-1 V2.2.3(2019-11)  
ETSI EN 301 489-17 V3.2.4(2020-09)  
EN 55032:2015+A11:2020  
EN 55035:2017+A11:2020  
EN61000-3-2:2014  
EN61000-3-3:2013  
EN : 62479:2010  
ETSI EN 300 328 V2.2.2 (2019-07)

### DISTRIBUTOR

North America:  
**Horizon Hobby LLC**  
2904 Research Road  
Champaign, IL 61822, USA  
Tel.: 217-403-3584

Sweden:  
**Minicars Hobby Distribution AB**  
Annelundsgatan 17C  
749 40 Enköping, Sweden  
Tel.: +46-171-14 30 02

The United Kingdom:  
**CML Distribution Ltd**  
Saxon House, Saxon Business Park, Hanbury Road  
Bromsgrove, Worcestershire  
B60 4AD, England  
Tel.: +44 (0)1527 575349

Australia:  
**Model Engines Pty Ltd**  
Unit 1/32 Bluett Drive  
Smeaton Grange  
NSW 2567 Australia  
Tel.: +61(0)411128284

## 产品介绍

皮卡兼具载人拉货两种属性，在世界各地都很流行，如果说到丰田最著名的皮卡，那海力士（Hilux）一定当仁不让。无论是东南亚雨林，还是非洲沙漠都能看到这台工具车干活的身影，在伊拉克、科索沃、阿富汗被当地武装加上机枪改装成战车，在北美市场，皮卡的老家，甚至可以跟美式皮卡分庭抗礼。Topgear三贱客时代曾对海力士做过一期评测，一辆已经行驶了30万公里，13年车龄的老车，先后经历了撞树、海水浸泡、拖车撞击，被防火烧掉了整个驾驶舱，但经历了这些后Hilux仍然可以发动。最后把车放到一栋73米高的大楼楼顶，然后炸掉整栋大楼。烟尘散尽后，当节目组把海力士从废墟中挖出来，简单拧拧松动的螺丝后，再次启动了发动机。这一系列实验完美的诠释了丰田海力士变态的质量和可靠性，最终这台车作为终身荣誉嘉宾收藏在Topgear的演播室里。

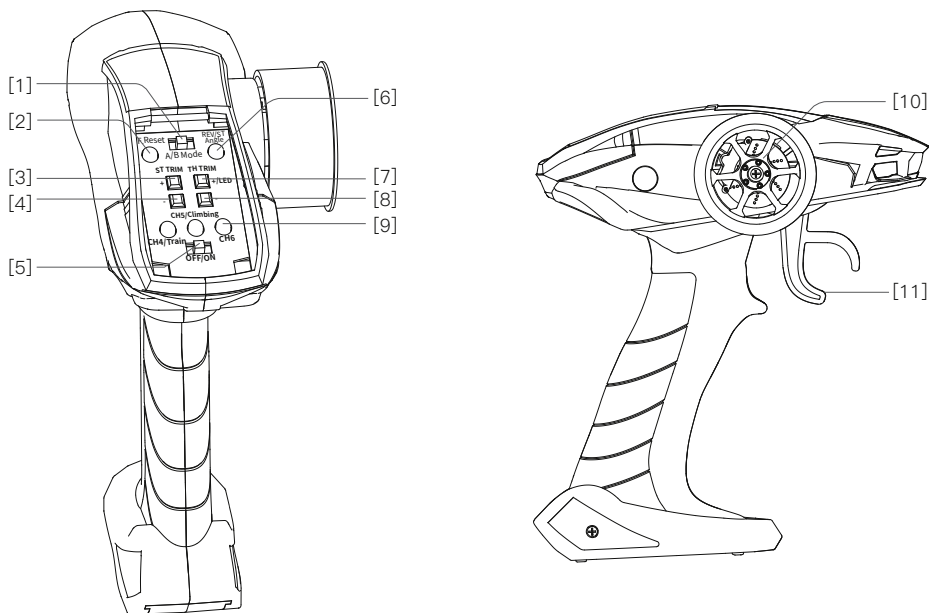
FMS获得丰田公司授权打造的皮卡海力士是丰田第三代Hilux，从格栅和前灯可以隐约窥到前两代丰田的风采，这一代的Hilux做得更加出色。和真车一样使用的“方形车身”线条硬朗、挺拔，充满美式复古气息，可降低装载高度的尾门、宽敞的驾驶室和下沉式车架。模型与真车一样是四轮驱动，使用金属大梁，非承载式底盘和可靠的多连杆悬挂系统。

经典的黄色车身烤漆配合运动条纹，后视镜是精致的电镀银，像真的内饰、中控台与方向盘。尾门可以开合，货斗还原了实车冲压成型的细节，空间很大，方便搭载各种“货物”行驶，无论静态陈设和动态行走都充满乐趣。

引擎盖可以打开，电子系统和电池容纳其中，操作一目了然，也方便玩家后续改造升级。

大灯、转向灯、倒车灯有联动灯控功能，采用与真车完全一样的灯控插件。仿真全地形轮胎非常柔软和复古轮毂搭配相得益彰，适合任意地形行走。

## 发射机概览



[1]	A/B模式切换键	[7]	油门微调+ (TH TRIM+) A模式/灯控切换1 B模式
[2]	复位按键 (F.Reset) A模式	[8]	油门微调- (TH TRIM-) A模式/灯控切换2 B模式
[3]	转向微调+ (ST TRIM+) A模式	[9]	通道6 (预留)
[4]	转向微调- (ST TRIM-) A模式	[10]	转向方向盘
[5]	电源开关	[11]	油门扣机
[6]	反向按键 A模式/转向角度限位 B模式		

A/B 模式功能拨动开关		
F.Reset	在使用时错乱设置, 调不回正常状态, 可以使用actory.Reset功能	确保模式功能拨动开关在A模式下, 扭住方向盘左或右, 同时单击F.Reset按键, 在两声长响后, 表示已完成出厂设置。
REV	在更换转向舵机后, 出现反向	确保模式功能拨动开关在A模式下, 扭住方向盘左或右, 同时单击REV按键, 在长响后, 表示已完成转向舵机反向设置。
	在更换电机后, 出现反向	确保模式功能拨动开关在A模式下, 拉或推住油门, 同时单击REV按键, 在长响后, 表示已完成电机反向设置。
	调整30%/50%/100%转向幅度	确保模式功能拨动开关在B模式下, 单击ST Angle按键, 在一声长响后, 表示已完成设置30%转向幅度。再单击ST Angle按键, 会听到长响两声, 表示已完成设置50%转向幅度。再单击ST Angle按键, 会听到长响三声, 表示已完成设置100%转向幅度。再单击为循环到一声长响, 表示已完成设置30%转向幅度。
ST TRIM	当转向中位不正中	确保模式功能拨动开关在A模式下, 按下ST TRIM+或-按键可进行转向中位微调。每单击按键都会响一声。当到达最大值及最小值时, 会出现一声长响。当到达中位值时会发出双响。
TH TRIM	当油门中位不正中	确保模式功能拨动开关在A模式下, 按下TH TRIM+或-按键可进行油门中位微调。每单击按键都会响一声。当到达最大值及最小值时, 会出现一声长响, 当到达中位值时会发出双响。
LED	设置灯效模式	一键式循环多模式切换。

发射器: 遗忘提醒	发射器在未有收到任何命令下, 10分钟后会发出报警声, 2分钟后进入休眠
发射器: 对频提醒	当发射器没有匹配接收器时, 发射器的指示灯不停快闪亮
发射器: 没有对频+低电提醒4.5V	发射器的指示灯慢闪, 及发出声响
发射器: 低电提醒4.5V	发射器的指示灯慢闪
车:对频提醒	车前灯不断闪亮
车:低电警报6.3-6.4V	所有灯不短闪亮, 转向及油门不受控
车:遗忘提醒	车辆未收到任何信号, 10分钟后会前后跳闪灯, 2分钟后进入休眠

按钮	车灯位置	功能	开机默认关闭	按次数					控制方式	备注
				I	II	III	IV	V		
LED 1#	车头部灯	前灯常亮		•	关闭	关闭	关闭	关闭		
		前灯高光常亮		关闭	•	•	关闭	关闭		
	车尾部灯			•	•	•	•	•	油门联动控制	倒车操作时 倒车灯亮

按钮	车灯位置	功能	开机默认关闭	按次数					控制方式	备注
				I	II	关闭				
LED 2#	转向灯	左转灯		○		关闭			方向联动控制	
		右转灯		○		关闭			方向联动控制	
		左右转双闪			•	关闭				

## 发射机电池安装

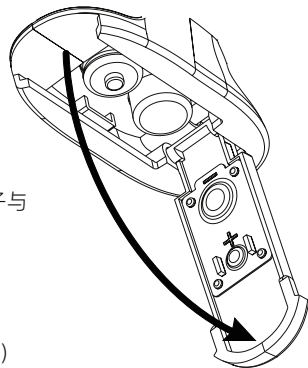
电池类型使用: AAA电池

请按照以下步骤安装发射机电池:

1. 打开电池仓盖。
2. 将4颗电量充足的AAA电池装入电池仓内, 确保电池上的金属端子与电池仓内的金属端子接触。
3. 盖好电池仓盖。

低电量报警: 当电量低于4.2v时, 面板上的LED慢闪报警提示。

注: 安装电池时, 请留意电池正负极, 避免安装错误。(如右图所示)



## 警告

- 本产品非玩具级别，不适合14岁以下的儿童操作使用。未成年人应在有经验的成年人陪同下操作使用。
- 请使用原厂部件更换损坏的部件。特别注意所有车辆接线的正负极。
- 只能使用2节锂聚合物电池。不要过度充电或过度放电，以免电池泄露或损坏产生火灾隐患。如果电池在充电过程中温度过热，请立即停止充电，并将电池与充电器断开。请勿在无人看管的情况下给电池充电。
- 如果您不确定如何安全地进行充电，请向经验丰富的遥控模型产品玩家寻求建议。不要让孩子在没有成人监督的情况下给电池充电。
- 由于电机在使用过程中会发热，两次操作中要留出大约10–15分钟的时间冷却电机，以延长产品的使用寿命。
- 务必选择合适的环境操作遥控模型，所选环境需远离电缆、无线电塔、深水及不稳定地形。本品操作者对其行为全权负责。的环境中，请确保将电子部件完全晾干以后再用。
- 确保每次操作前检查车辆的无线接收范围，以防止无线信号丢失或受干扰。
- 在您的能力范围内操作此产品。在任何时候，如果车辆操作有危险，则绝对不值得冒险。
- 通电方式:务必先开遥控器再将车子通电。断电方式:务必先将车子断电再关遥控器。以上顺序如逆转，则可能引起遥控模型失控，导致人身伤害或财产损失。
- 遥控器电池低电时，不要操作模型车，以免造成失控。
- 模型产品上的塑胶件容易因极冷或极热气候出现变形或损坏的状况。所以请将模型产品存放在气候受控的室温环境中，切勿靠近任何热源，如烤箱或加热器等。
- 切勿更改接收机天线的长度，以免影响无线电系统的接收范围。
- 仅使用厂家指定的电池。
- 请勿打开、拆卸或自行维修电池。
- 请勿挤压、刺穿或接触电池的金属端子。
- 请勿将电池置于高温环境或液体中。
- 请注意防止电池跌落、碰撞或振动。
- 请将电池存放在干燥阴凉的环境中。
- 如果电池损坏，请立即停止使用。

## 开机操作

1. 检查系统状态，确保：
  - 电池电量充足且安装正确。
2. 将开关拨到【ON】位置，LED灯常亮。
3. 连接接收机电源。
  - 为保障模型及人员安全，使用时请先打开发射机再给接收机上电



### 警告

- 此时系统已启动，请谨慎操作，否则可能导致产品损坏或人员伤亡。
- 为了您的安全请将发射机开关和油门打到安全位置。

## 操作指引

准备操作完成后，您可以按照本章指引开始使用本产品。

### 1、自动对码（发射机和接收机在出厂前已对码成功。）

如需更换其他的发射机或接收机，请按照如下步骤进行对码：

1. 发射器电源打开，对码模式，灯不停闪亮；
2. 接收板电源打开，前车灯不停闪亮，进入对码模式；
3. 当对码成功，发射机灯全亮，车上面的灯全部关闭；

注意：对码时请先操作发射机进入对码状态，再操作接收机进入对码状态。

### 2、关机

请按照以下步骤关机：

1. 断开接收机电源。
2. 将开关拨到[OFF]位置，使发射机关闭。



#### 危险

- 关闭时，请务必先关闭接收机电源，再关闭发射机，否则可能导致模型损坏、人员受伤。

## 发射机规格

产品型号	HT-TX02
适配模型	车
无线频率	2.4GHz
发射功率	<20dBm
无线协议	ANT
遥控距离	>100m(空旷无干扰地面距离)
通道分辨率	256级
电池	6V DC 1.5AAA*4
充电接口	无
续航时间	依电池类型
低电压报警	<4.45V
天线类型	内置单天线
数据接口	无
温度范围	-10°C ~ +60°C
湿度范围	20-95%
在线更新	无
遥控器颜色	黑
外形尺寸	长: 118mm 宽: 73mm 高: 145mm
机身重量	151g
认证	CE, FCC ID: 2AUBX-HT-TX02

## 油门扳机位置



## 车辆操作

- 步骤1：打开发射器, 发射器前灯会闪亮, 进入对频模式。  
 步骤2：打开接收器开关, 车前灯会闪亮, 进入对频模式。  
 步骤3：当发射器,接收器对上频成功时, 发射器前灯会长亮, 车前灯会关闭。

## 齿轮齿盒设置

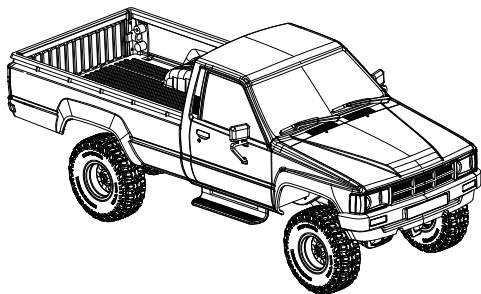
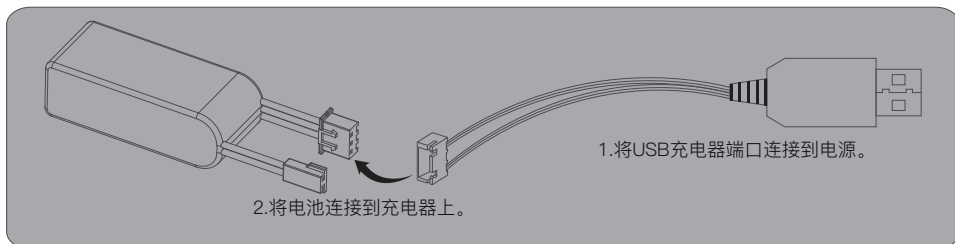
齿轮啮合是模型车内小齿轮和直齿轮之间的间隙配合。如果更换电机或齿轮传动部件, 请检查齿轮咬合是否过于紧密, 如过于紧密, 则可能导致过早出现磨损。





## 电池充电

- 1.将充电器连接到USB端口，然后将电池连接到充电器电源线上。
- 2.充电时，LED灯状态为红色，充电完成时，LED灯状态为绿色。
- 3.请勿在无人看管的情况下充电!
- 4.如果发现电池或充电器温度过热，请立即断开电池和充电器，因为这可能是由内部短路引起的。



### 注意

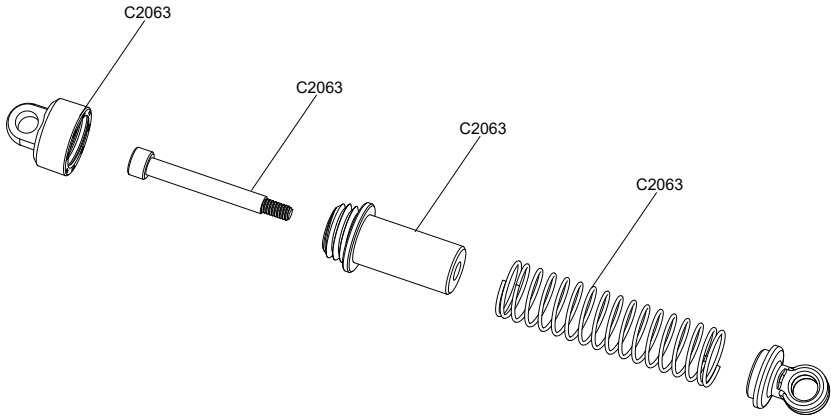
- 1.如果长时间不用，请拔下电池，以防电池损坏。
- 2.不要打开、拆解或试图维修电池。
- 3.电池需断开连接接收板,才能进行充电。

## 配件表

C2159	海力士引擎盖	C2172	海力士车窗
C2160	海力士前/后灯杯组	C2074	1:18 后轮轴
C2161	海力士引擎盖连接座	C2071	1:18 避振器 13圈弹簧0.7线径
C2162	海力士雨刮器及后视镜	C2063	1:18 避振器 13圈弹簧
C2163	海力士防撞	C2064	海力士连杆
C2164	海力士灯镜片	C2066	1:18 球轴
C2165	海力士车壳	C2067	1:18 C座胶件
C2166	海力士底板	C2068	1:18 前/后桥胶件
C2167	海力士手柄	C2069	1:18 舵机摇臂
C2168	八孔形状轮毂 电镀	C2126	海力士镜片
C2052	7.4V 380mAh电池	C2075	1:18 前轮转向轴
C2169	11816 灯线组	C2076	1:18 牙箱胶件
C2051	USB 平衡充电器 7.4V 1000mA	C2139	FMS 1:18 二合一电调接收
C2049	1:18 050电机 +电机齿	C2138	FMS 1:18 2.4G 遥控
C2057	1:18 塑胶齿轮	C2137	HT-TX02 发射接收套装
C2170	海力士传动轴套装	C2173	11816 仪表盘
C2021	1:18 1kg 舵机		

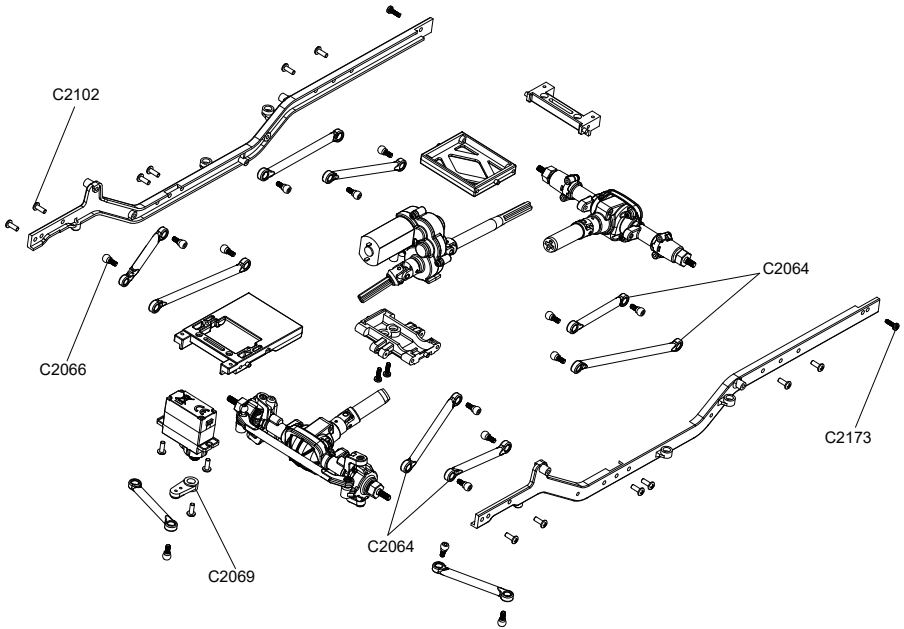
(EN) VIBRATION AVOIDANCE GROUP

(CN) 避振组



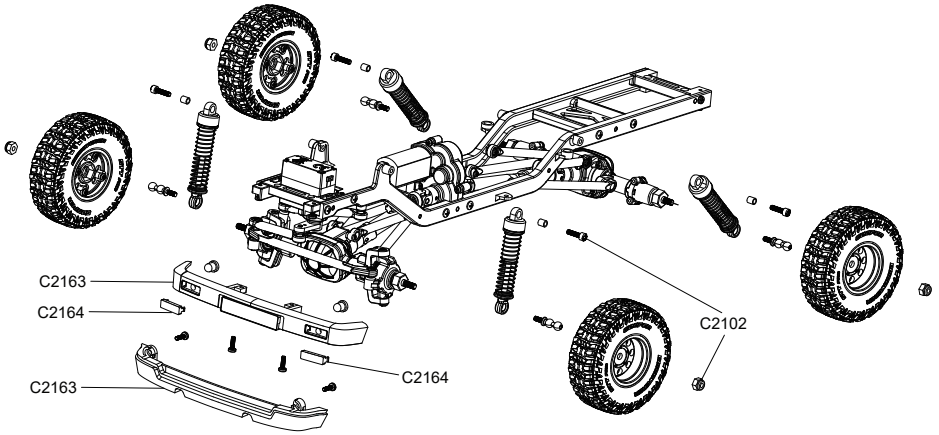
(EN) SEMI FINISHED FRAME GROUP

(CN) 车架半成品组



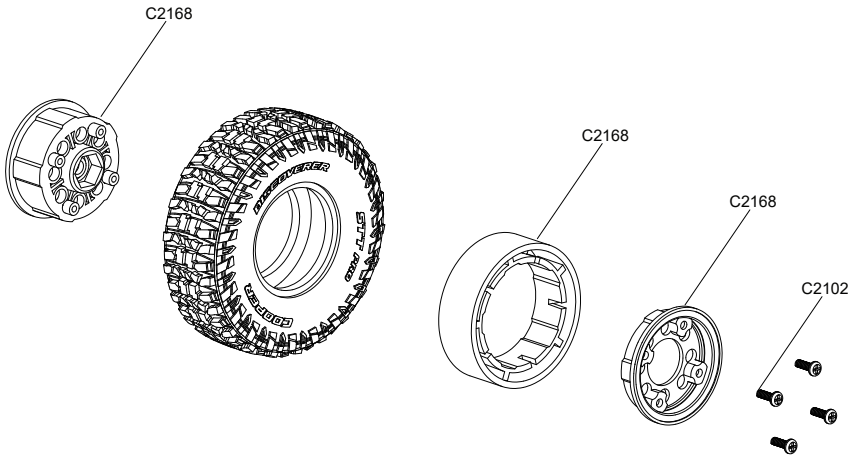
(EN) FRAME GROUP

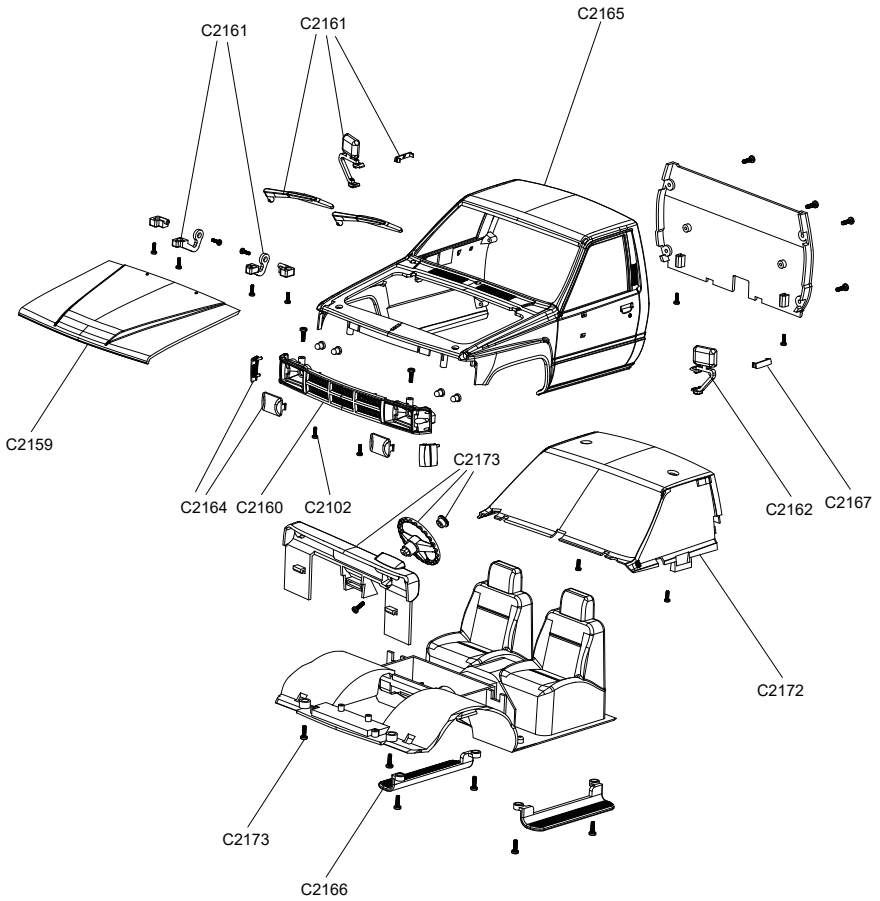
(CN) 车架组

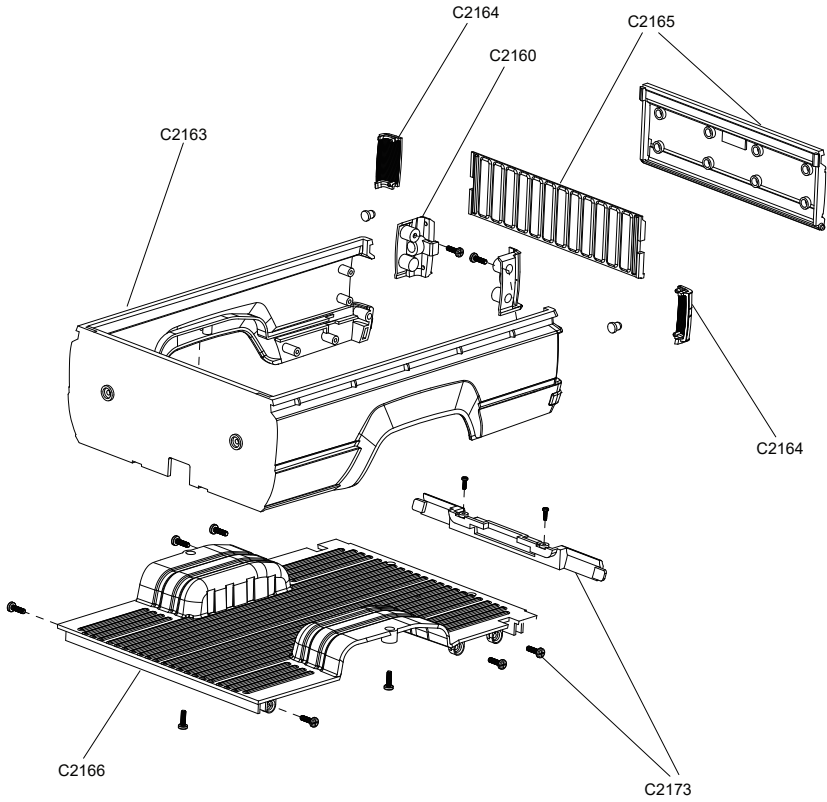


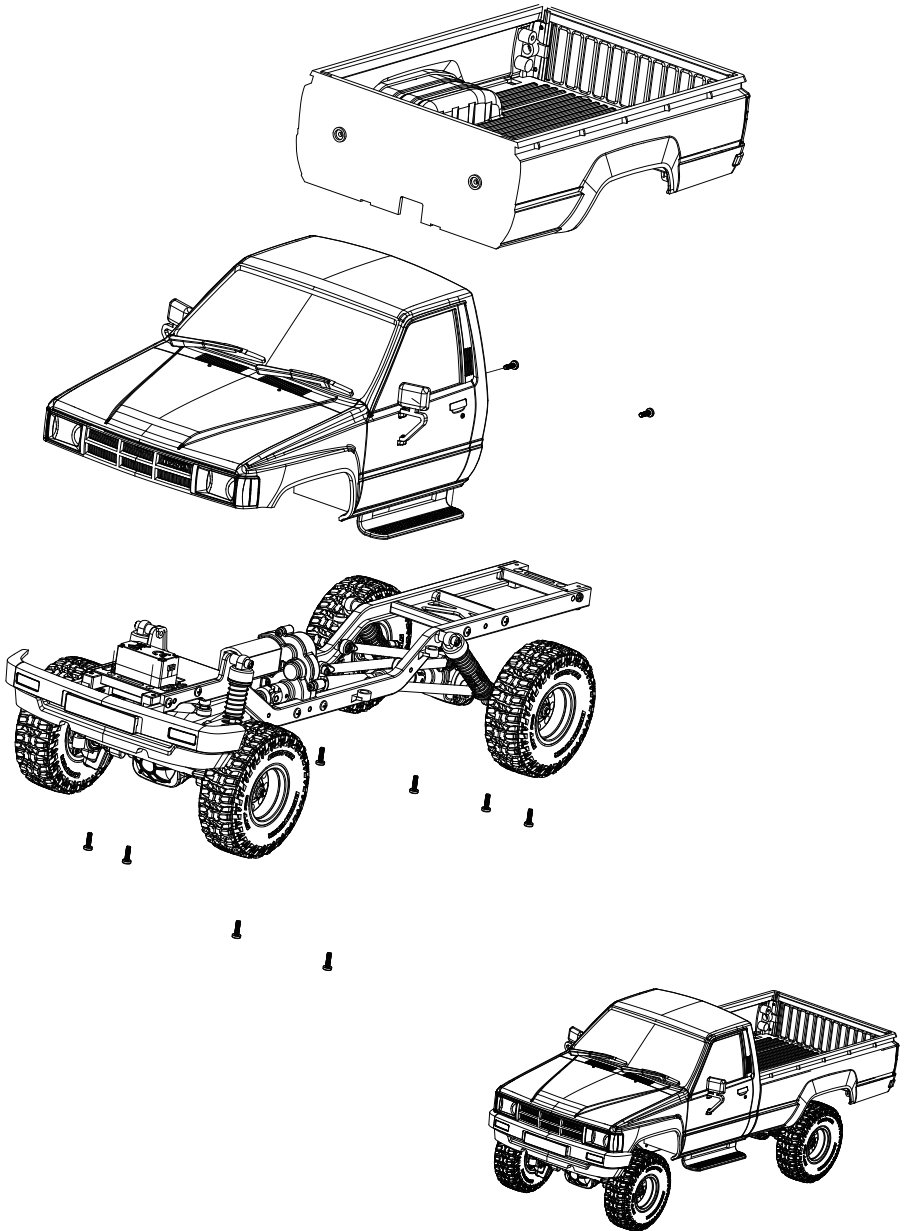
(EN) TYRE GROUP

(CN) 轮胎组



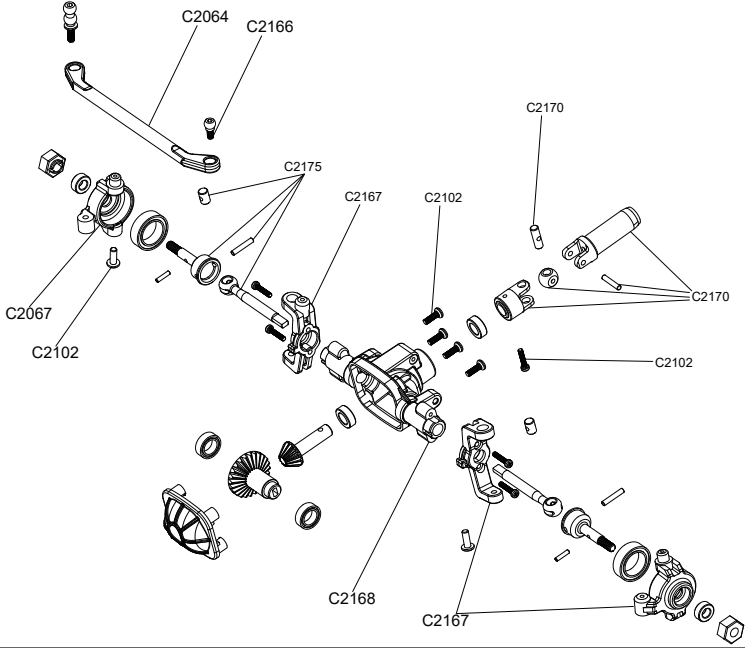






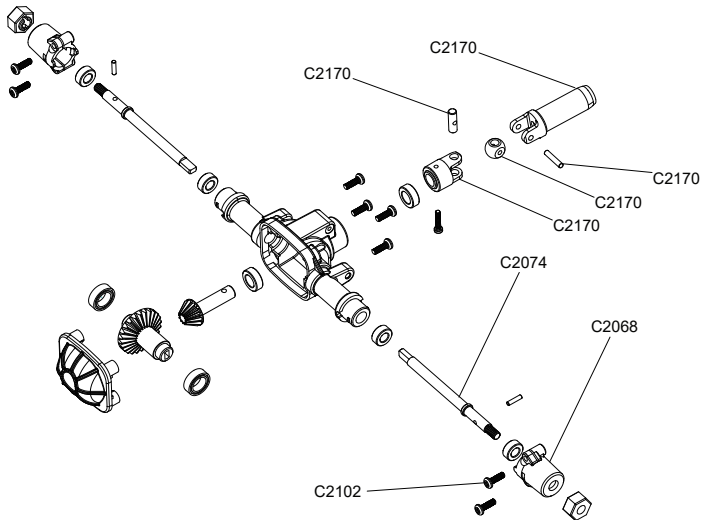
(EN) FRONT AXLE GROUP

(CN) 前桥组

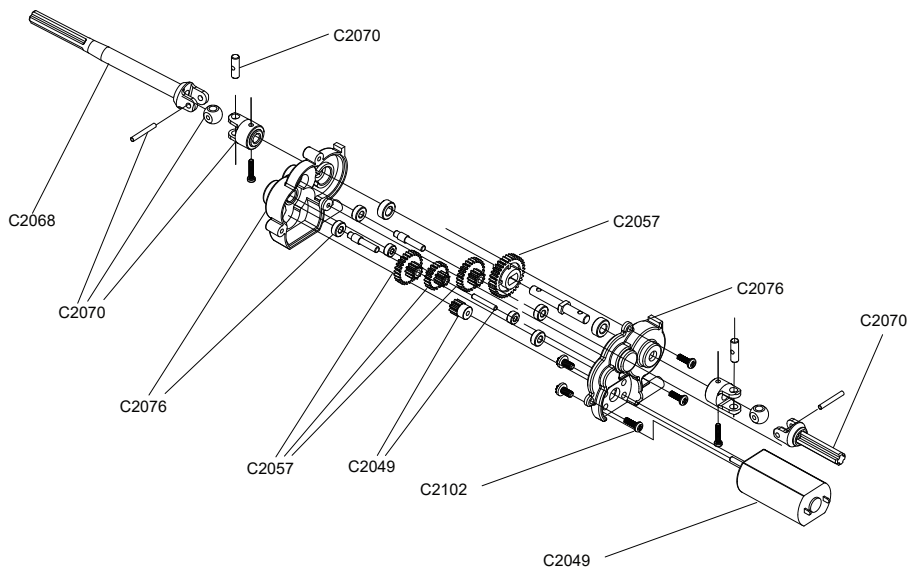


(EN) REAR AXLE GROUP

(CN) 后桥组







**"S"** for spare part

**"O"** for optional part

<b>PART NUMBER</b>	<b>PRODUCT DESCRIPTION</b>	<b>S/O</b>
C2159	1:18 HILUX Hood	S
C2160	1:18 HILUX Front and Rear Light Cup Set	S
C2161	1:18 HILUX Hood Mount Set	S
C2162	1:18 HILUX Rearview Mirror And Wiper	S
C2163	1:18 HILUX Bumper And Side Panel	S
C2164	1:18 HILUX Lens	S
C2165	1:18 HILUX Body SHELL	S
C2166	1:18 HILUX CHASSIS	S
C2167	1:18 HILUX HANDLE	S
C2168	Eight Planets Style Wheels plastic parts electroplate	S
C2169	1:18 HILUX Light set	S
C2049	1:18 050 Motor set	S
C2057	1:18 Plastic Gear set	S
C2170	1:18 HILUX Transmission Shaft full set	S
C2021	1:18 1KG High Torque 3wire Servo	S
C2172	1:18 HILUX Window	S
C2074	1:18 Rear Wheel Shaft	S
C2071	1:18 Wheel Hex	S
C2063	1:18 SHOCK PLASTIC PARTS	S
C2064	1:18 HILUX Connecting Rod	S
C2066	1:18 BALL HEAD	S
C2067	1:18 Steering Hub & Spindle	S
C2068	1:18 FRONT/REAR AXLE parts	S
C2069	1:18 SERVO HORN	S
C2126	1:18 HILUX MIRROR LENS	S
C2075	1:18 FRONT OUTDRIVE SHAFT	S
C2076	1:18 Gear Box Plastic Parts	S
C2139	FMS 1:18 Receiver	S
C2138	FMS HT-TX02 Transmitter	S
C2137	FMS HT-TX02 Transmitter Receiver Set	S
C2173	11816 DASH BOARD	S
		S
		S
		S
		S
		S
		S
		S
		S
		S
		S
		S
		S
		S
		S
		S
		S
		S
		S
		S
		S
		S
		S
		S
		S
		S
		S
		S
		S

"S" 为配件

"O" 为升级件

PART NUMBER	PRODUCT DESCRIPTION	S/O
C2159	海力士 引擎盖	S
C2160	海力士 前/后灯杯组	S
C2161	海力士 引擎盖连接座	S
C2162	海力士 雨刮器及后视镜	S
C2163	海力士 防撞	S
C2164	海力士 灯镜片	S
C2165	海力士 车壳	S
C2166	海力士 底板	S
C2167	海力士 手柄	S
C2168	八孔形状轮毂 电镀	S
C2169	11816 灯线组	S
C2049	1:18 050电机 +电机齿	S
C2057	1:18 塑胶齿轮	S
C2170	海力士 传动轴套装	S
C2021	1:18 1kg 舵机	S
C2172	海力士 车窗	S
C2074	1:18 后轮轴	S
C2071	1:18 车轮六角接合件	S
C2063	1:18 避振器 13圈弹簧	S
C2064	海力士 连杆	S
C2066	1:18 球轴	S
C2067	1:18 C座胶件	S
C2068	1:18 前/后桥胶件	S
C2069	1:18 舵机摇臂	S
C2126	海力士 镜片	S
C2075	1:18 前轮转向轴	S
C2076	1:18 牙箱胶件	S
C2139	FMS 1:18 二合一电调接收	S
C2138	FMS 1:18 2.4G 遥控	S
C2137	HT-TX02 发射接收套装	S
C2173	11816 仪表盘	S
		S
		S
		S
		S
		S
		S
		S
		S
		S
		S
		S
		S
		S
		S
		S
		S
		S
		S
		S
		S
		S
		S

